

**California English Language Development Test
Number and Percent of Students at Each Overall Proficiency Level
Annual Assessment - All Students -- 2005-06**

	Grade 9	Grade 10	Grade 11	Grade 12	Total Tested	Overall %
Advanced	12	17	15	14	58	26%
Early Advanced	27	33	19	8	87	40%
Intermediate	20	13	10	9	52	24%
Early Intermediate	4	2	4	3	13	6%
Beginning	6	0	2	1	9	4%
Number Tested	69	65	50	35	219	100%
% Tested	100%	100%	100%	100%	*	100%

Skill Area Mean Scale Scores 2005-2006 and score growth from 2002

Listening/ Speaking	519.2 (-.4)	540.4 (28.7)	537.9 (32.4)	544.6 (10.7)
Reading	539.4 (6.1)	556.4 (35-8)	554.1 (34.8)	558.2 (-3.9)
Writing	539.4 (19.2)	557.1 (60.8)	543.5 (45)	541.3 (4.7)

In the past five year period, the overall proficiency level for advanced and early advanced has increased from 49% to 66% of the total CELDT population. In the same period, the beginning and early intermediate proficiency level has dropped from 34% to 10% of the total CELDT population.

Annual Assessment - All Students - 2001-02

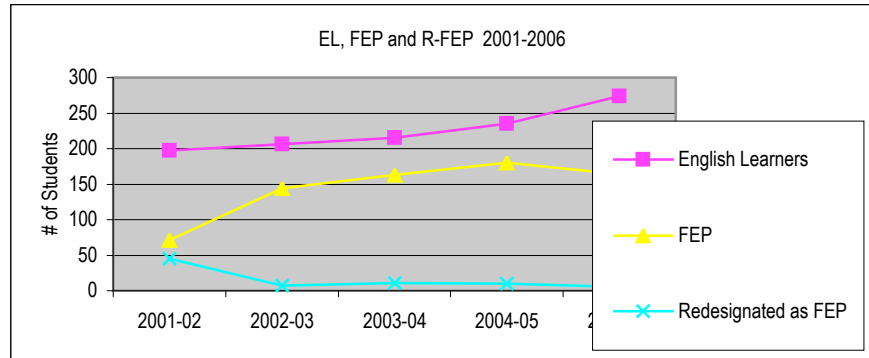
	9	10	11	12	Total Tested	Overall %
Advanced	6	6	7	4	23	14%
Early Advanced	16	19	10	13	58	35%
Intermediate	17	14	9	5	44	26%
Early Intermediate	5	11	11	2	44	26%
Beginning	3	6	5	0	14	8%
Number Tested	47	55	42	24	168	100%
% Tested	100%	100%	100%	100%	*	100%

Skill Area Mean Scale Scores 2001-2002

Listening/ Speaking	519.6	511.7	505.4	533.9
Reading	533.3	520.6	514.3	562.1
Writing	520.2	496.9	498.5	536.6

Number of Students Designated as Fluent English Proficient (FEP) and Students Redesignated as FEP

Santa Rosa HS	Enrollment	English Learners	FEP	Redesignated as FEP	% Redesignated
2001-02	1858	197	71	45	25.90%
2002-03	1965	206	144	7	11%
2003-04	1983	215	163	11	5.30%
2004-05	2020	235	180	10	4.70%
2005-06	2030	274	164	5	2.10%



Anecdotal evidents suggests that changes in school and district personnel led to inaccurate and incomplete reporting during 2004-05